



THE SIX SENSE BASES

Indriya / Āyatana

Eye- Consciousness



Eye

Forms



Eye- Contact

Ear- Consciousness



Ear

Sounds



Ear- Contact

Nose- Consciousness



Nose

Smells



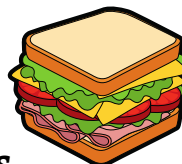
Nose- Contact

Tongue- Consciousness



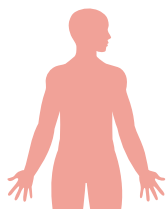
Tongue

Tastes



Tongue- Contact

Body- Consciousness



Body

Touch



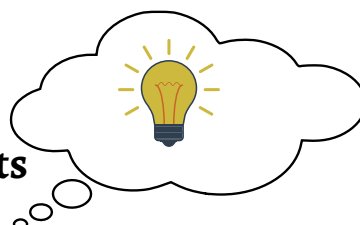
Body- Contact

Mind- Consciousness



Mind

Mental Objects



Mind- Contact